

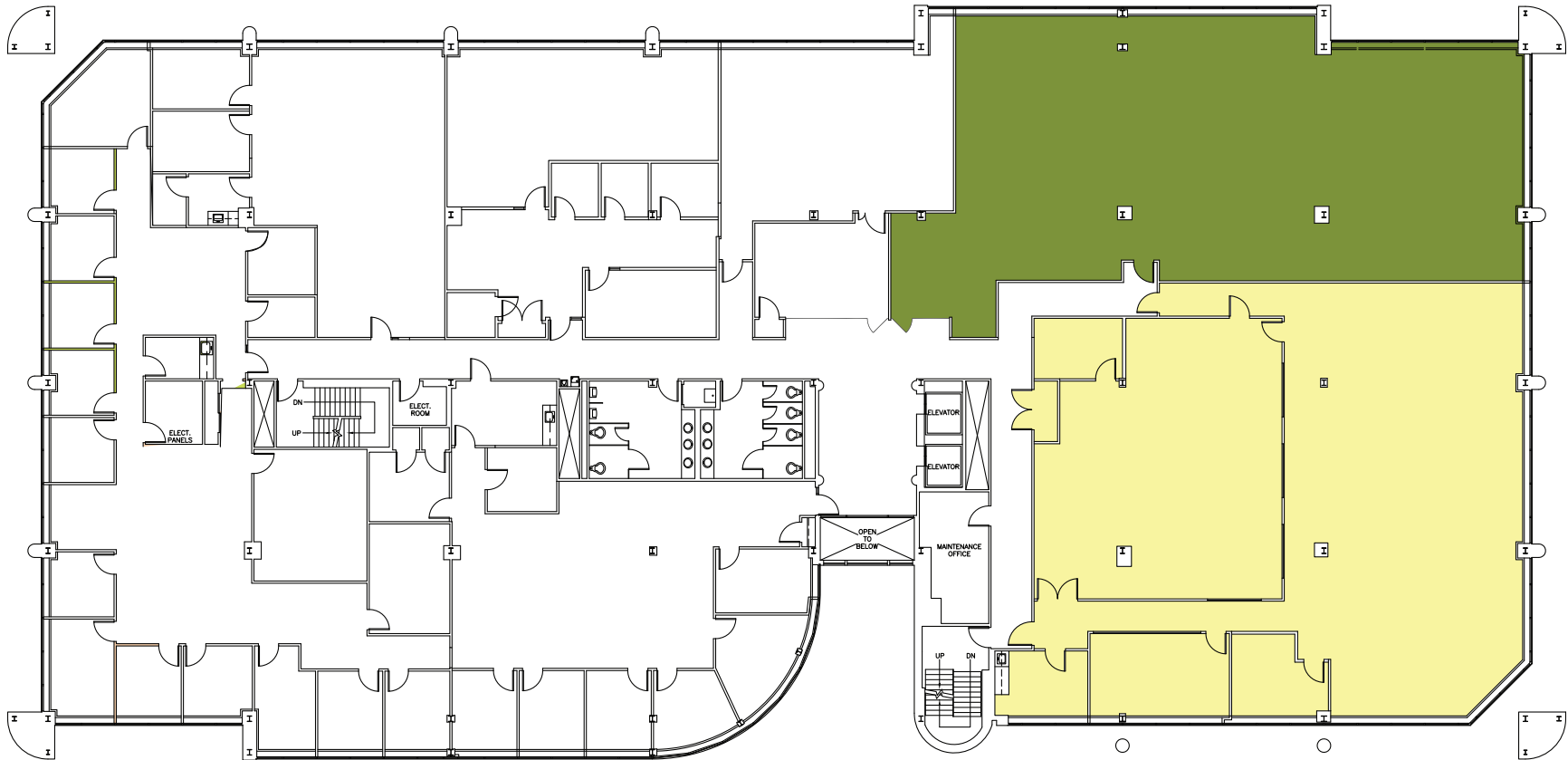
# WESTBOROUGH

— EXECUTIVE PARK —

## 114 TURNPIKE ROAD

2<sup>ND</sup> FLOOR

■ 4,238 RSF    ■ 5,633 RSF



For more information or to schedule a tour, please contact:

**John Lashar**  
617.439.7887

[John.Lashar@transwestern.com](mailto:John.Lashar@transwestern.com)

**Paul Leone**  
617.439.3782

[Paul.Leone@transwestern.com](mailto:Paul.Leone@transwestern.com)

**Danielle DeMarco**  
617.439.9312

[Danielle.Demarco@transwestern.com](mailto:Danielle.Demarco@transwestern.com)

Owned by:



Exclusive Leasing Agent:

